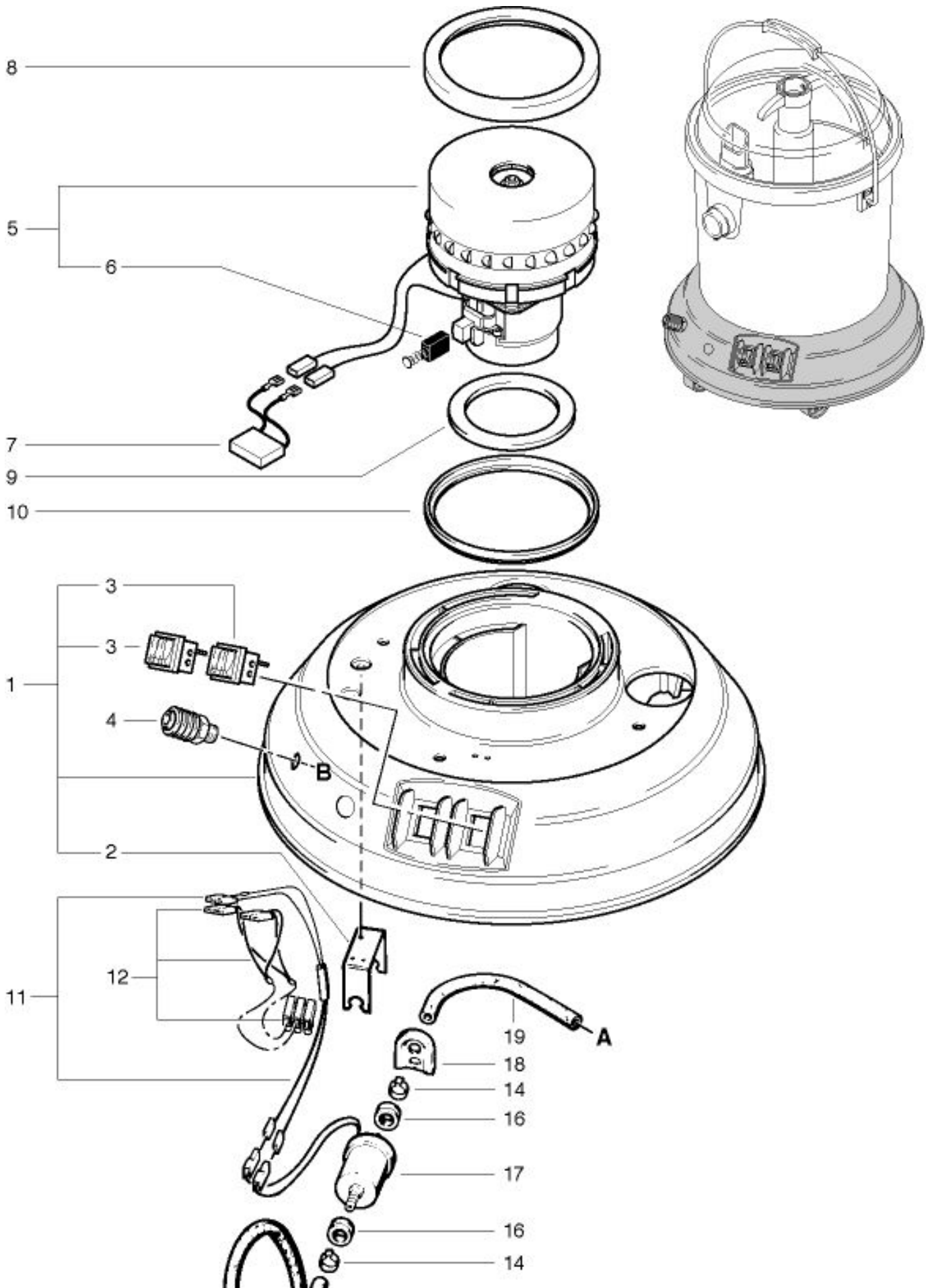


Home-Cleaner Vaccum motor

As at: 05/24/08 Time:06:36



Home-Cleaner

Vaccum motor

As at: 05/24/08 Time:06:36

Pos.	Description	Reference
01	Housing complete, including Items 2+3	030.010A
02	Pump holder ALU	P...207B
03	Tumbler switch	P...240
04	Female quick connector 1/4«« AG	P...500B
05	Vacuum motor, 1000W, OEP	P...870 E
06	Carbon brush (Pair) OEP	P...870KB
07	Capacitor 0,1uF	P...391
08	Profile sealing, black, OEP	P...971C
09	Packing ring 115/78x10 mm	P...013
10	Profile, blue, OEP	P...971G
11	Cable strand with diode	030.367
12	Cable strand with clamp	P...389
13	Male connector NW 8-1/4««	P...525K
14	Hose clamp 14,5 mm	P...550A
15	Hose 400 mm	030.021
16	Grommet 14 mm	P...207A
17	NDS-L - pump	P...815
18	Seal 42x45 mm	030.014
19	Hose 360 mm	030.020