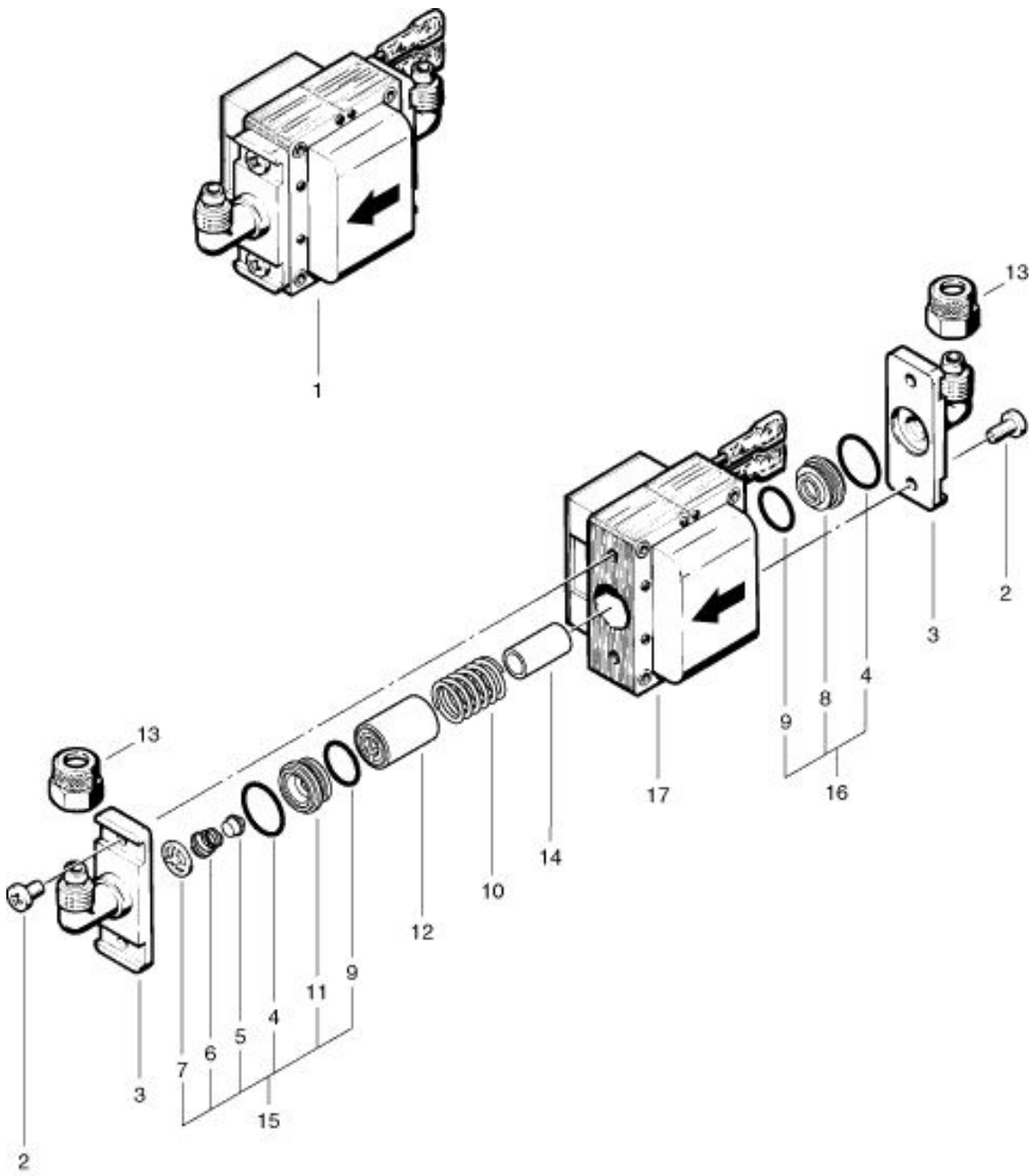


**RA 400 E
Pump**

As at: 05/27/08 Time:05:25



RA 400 E

PUMPE

B 7-09.2003

RA 400 E

Pump

As at: 05/27/08 Time:05:25

Pos.	Description	Reference
01	NDS-C-pump	P...812
02	Raised head screw M 4x10 mm	P...481M
03	Angled fitting NW 6	P...810M
04	O-ring 14x1,5 mm	P...809K
05	Valve cone	P...810S
06	Valve spring	P...809P
07	Counter ring	P...809N
08	Spring support	P...809F
09	O-ring 12x1,5 mm	P...809L
10	Pressure spring for piston	P...809E
11	Valve seating	P...809Q
12	Piston	P...809B
13	Sleeved nut 8/6-M 12	P...523G
14	Distance piece	P...809 S
15	Valve seating compl. Including: items 4-7, 9+11	P...810 Y
16	Spring support compl. Including: items 4,8+9	P...810 X
17	Magnet coil 230 V/50 Hz	P...809 A