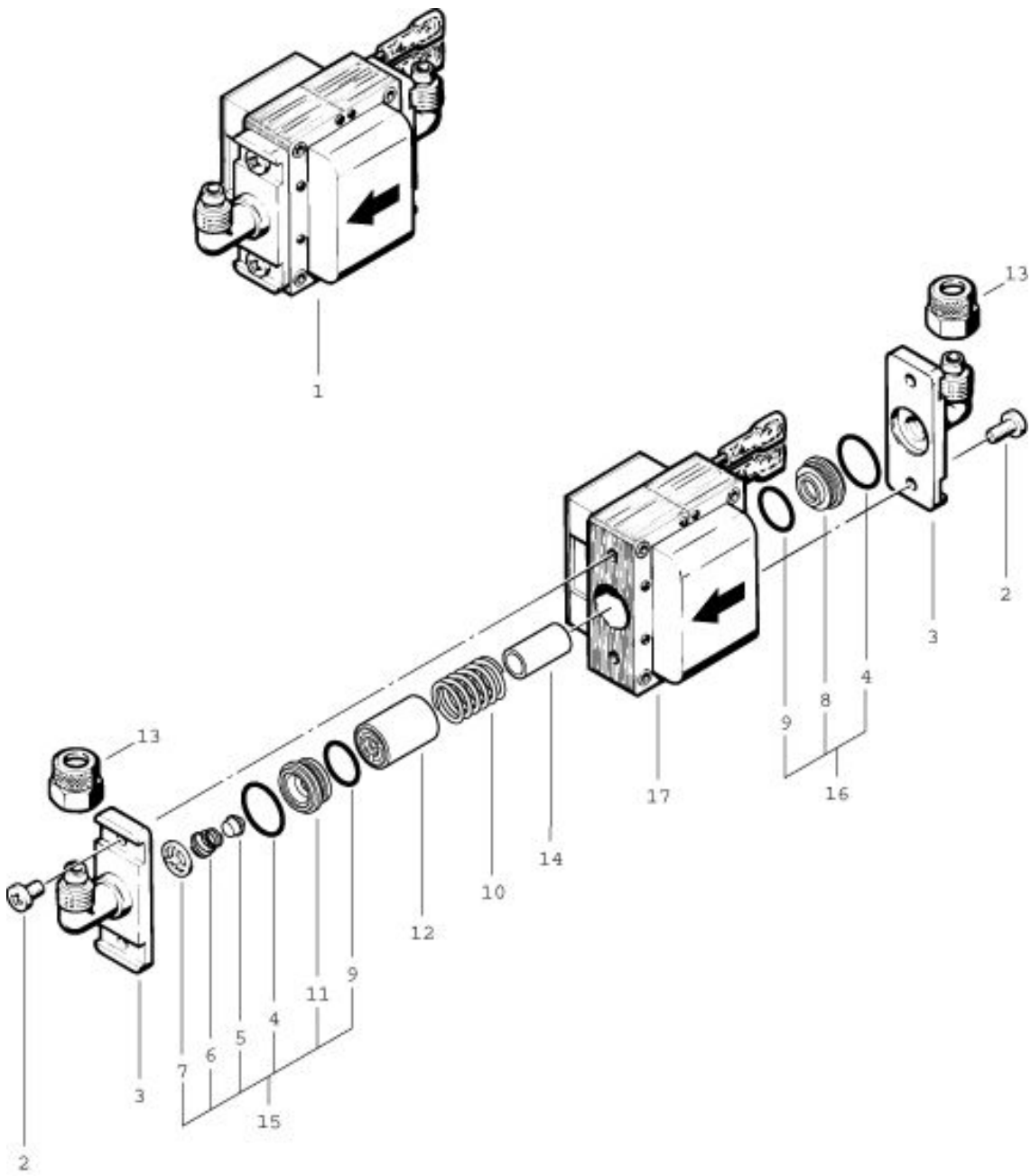


**RA 410 B
Pump**

As at: 05/27/08 Time:06:00



RA 410 B

Pump

As at: 05/27/08 Time:06:00

Pos.	Description	Reference
01	NDS-C-pump 24 volts after serial no. 7918	P...817
02	Raised head screw M 4x10	P...481M
03	Angled fitting NW 6	P...810M
04	O-ring 14x1,5 mm	P...809K
05	Valve cone	P...810S
06	Pressure spring	P...809P
07	Counter ring	P...809N
08	Spring support	P...809F
09	O-ring 12x1,5 mm	P...809L
10	Pressure spring for piston	P...809E
11	Valve seating	P...809Q
12	Piston	P...809B
13	Sleeved nut 8/6-M 12	P...523G
14	Distance piece	P...809 S
15	Valve seating compl. Including: items 4-7, 9+11	P...810 Y
16	Spring support compl. Including: items 4,8+9	P...810 X
17	Magnet coil 24 volts	P...816 B