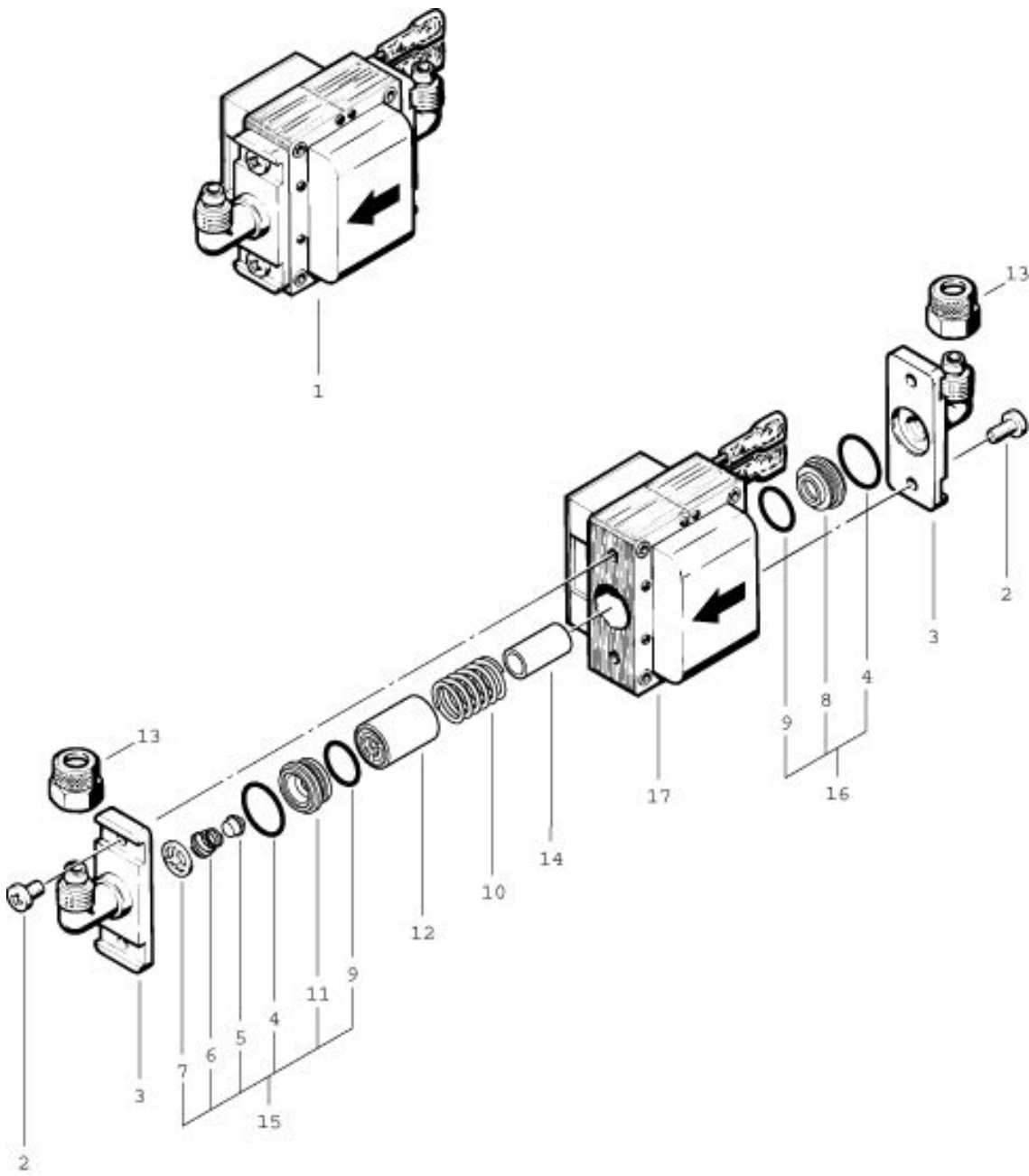


**RA 410 E**  
**Pump**

As at: 05/27/08 Time:05:49



# RA 410 E

## Pump

As at: 05/27/08 Time:05:49

<b>Pos.</b>	<b>Description</b>		<b>Reference</b>
01	Schwingkolbenpumpe NDS-XC	NDS-C - pump	P...812
02	Raised head screw M 4x10 mm		P...481M
03	Angled fitting NW 6		P...810M
04	O-ring 14x1,5 mm		P...809K
05	Valve cone		P...810S
06	Valve spring		P...809P
07	Counter ring		P...809N
08	Spring support		P...809F
09	O-ring 12x1,5 mm		P...809L
10	Pressure spring for piston		P...809E
11	Valve seating		P...809Q
12	Piston		P...809B
13	Sleeved nut 8/6-M 12		P...523G
14	Distance piece		P...809 S
15	Valve seating compl. Including: items 4-7, 9+11		P...810 Y
16	Spring support compl. Including: items 4,8+9		P...810 X
17	Magnet coil 230 V/50 Hz		P...809 A