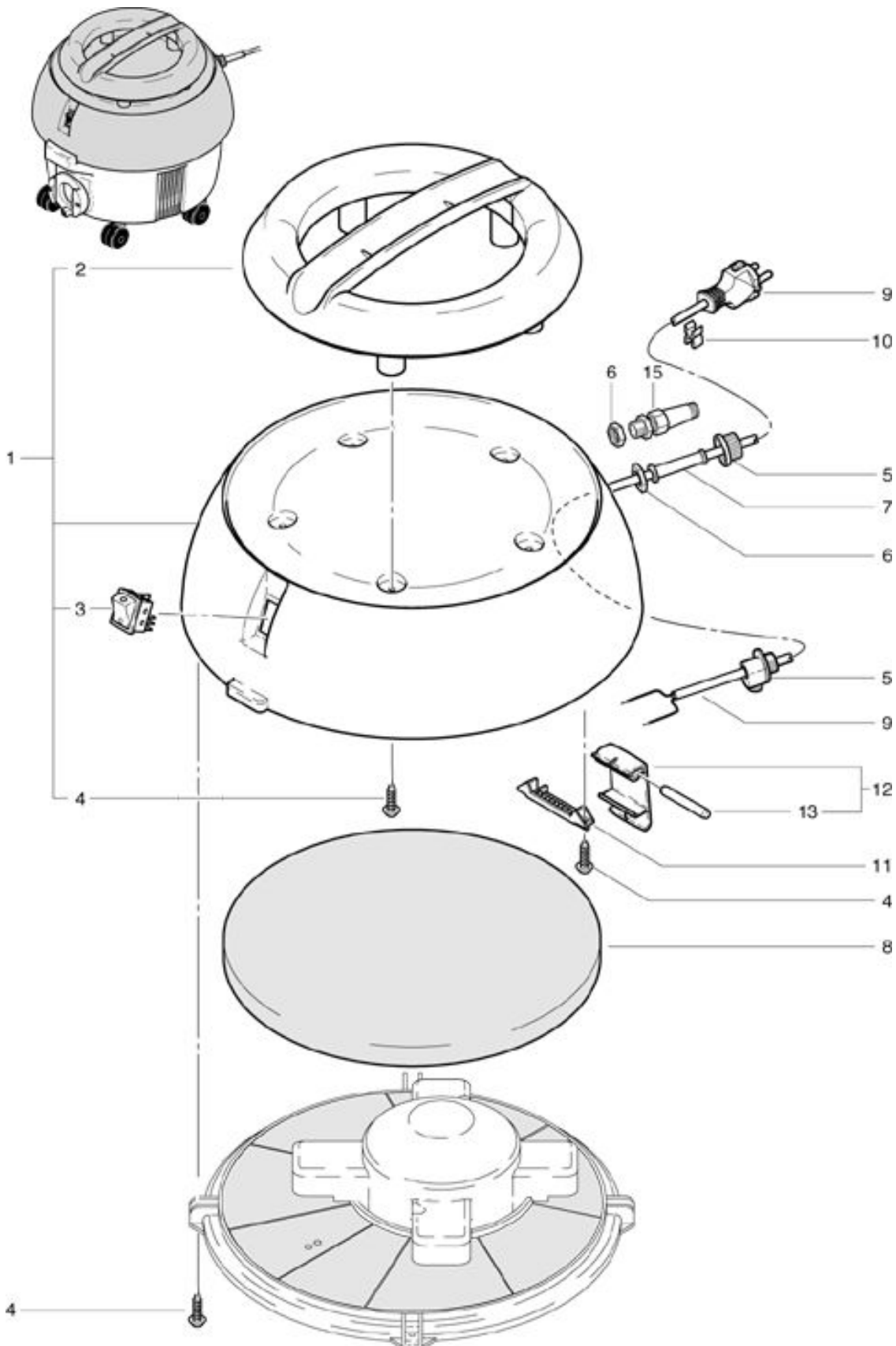


S 10
Cover

As at: 05/25/08 Time:05:47



S 10

Cover

As at: 05/25/08 Time:05:47

Pos.	Description	Reference
01	Dome complete, including Items 2-4	022.110
02	Handle	022.112
03	Tumbler switch LED	P...240F
04	PT screw KA 40x16 mm	P...516G
05	Cable clamp up to machine no. 8453	P...279
06	Counter nut PG 9	P...279H
07	Cable protection up to machine no. 8453	P...280
08	Sound absorbing sheet	022.116
09	Electrical connection SEV	P...287
09	Electrical connection VDE	P...288
10	Cable clamp	P...278
11	Pin hold	022.114
12	Seal lever complete	022.122
13	Pin	022.115
15	Cable clamp beg. Mach.Nr. 8501 001	P...279 K