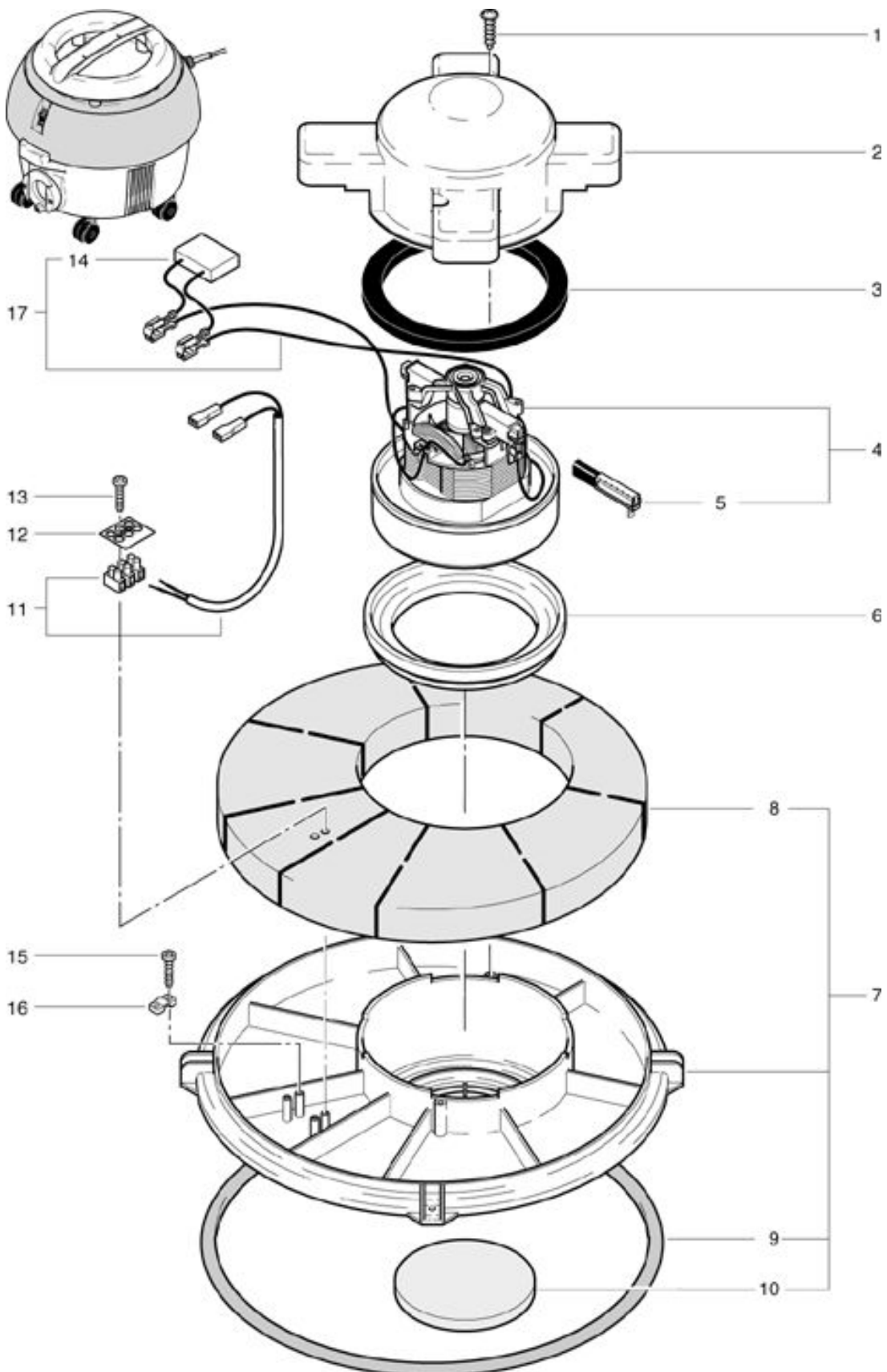


S 10
Vacuum motor

As at: 05/25/08 Time:05:49



S 10

Vacuum motor

As at: 05/25/08 Time:05:49

Pos.	Description	Reference
01	PT screw KA 40x16 mm	P...516 C
02	Lower motor	022.132
03	Seal for motor up to machine no.8249	022.133
03	Seal for motor as from machine no. 8250	012.133
04	Vacuum motor up to machine no. 8249	P...870 K
04	Vacuum motor as from machine no. 8250	P...872
05	Carbon brush up to machine no.8249	P...870 KB
05	Carbon brush up to machine no.8250	P...872 A
06	Profile as from machine no. 8249	P...971 H
06	Profile as from machine no. 8250	P...971 J
07	Motorplate compl.	022.130
08	Noise absorber	022.135
09	Bucket gasket	022.136
10	Airfilter for motor	022.134
11	Cable tree	022.139
12	Marking plate	P...390
13	PT screw KA 50x16 mm	P...516 E
14	Capacitor	P...393 E
15	PT screw KA 50x18	P...516 Q
16	Cable clamp	4611085
17	Cable tree with capacitor	022.143