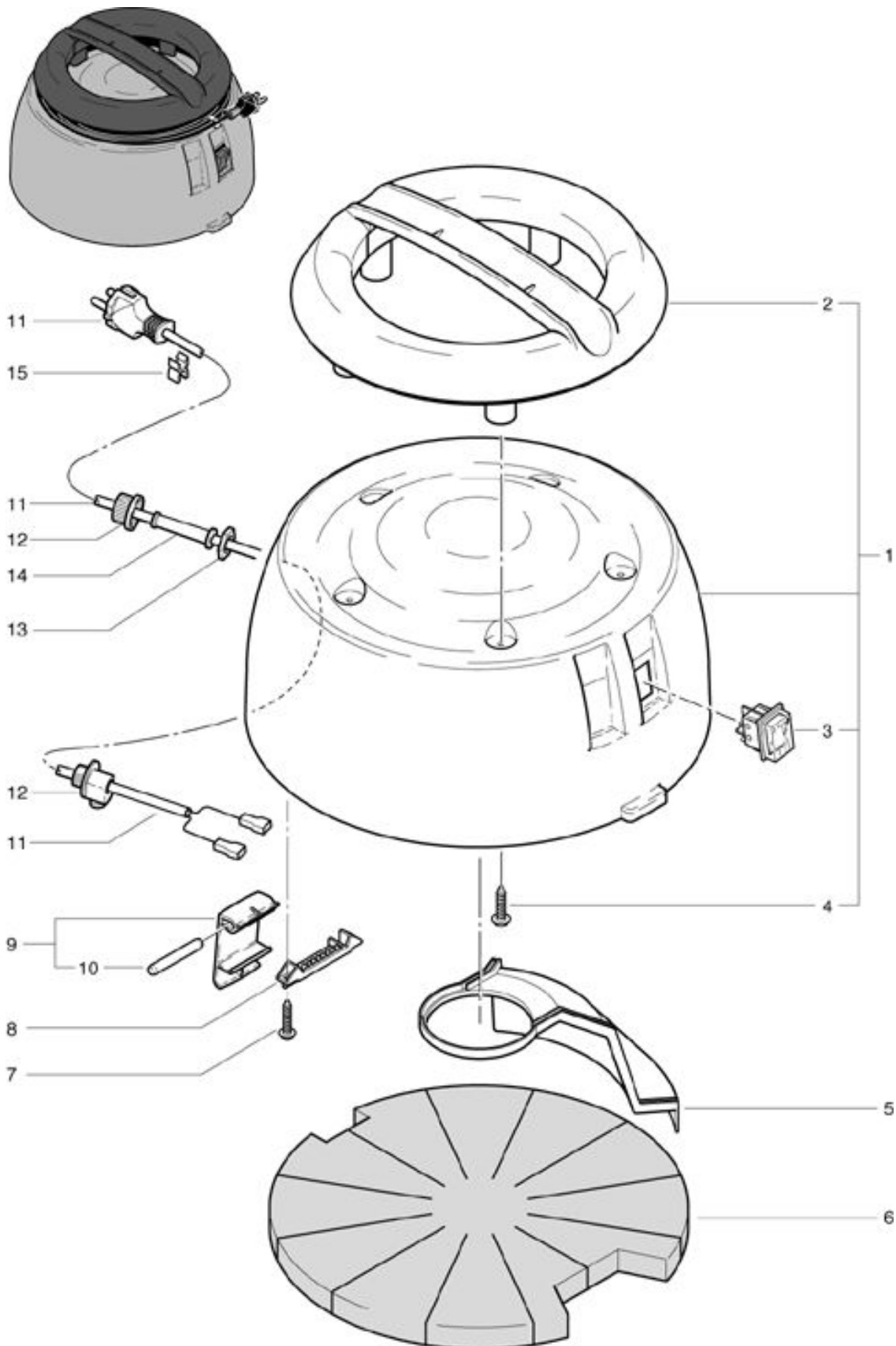


# SW 50 Standard Dome

As at: 05/24/08 Time:08:25



# SW 50 Standard Dome

As at: 05/24/08 Time:08:25

<b>Pos.</b>	<b>Description</b>	<b>Reference</b>
01	Dome complete, SW 50 including Items 2,3,4	026.110
02	Handle	022.112
03	Tumbler switch - SW 50	P...240
04	PT screw KA 40x16	P...516 G
05	Air canal cover	020.213
06	Noise absorber	021.206
07	PT screw KA 30x20	P...516 E
08	Pin hold	022.114
09	Seal lever complete	022.122
10	Pin	022.115
11	Electrical connection SEV 15 m	656611711
11	Electrical connection VDE 15 m	656611765
12	Cable clamp	P...279
13	Conter nut PG 9	P...279 H
14	Cable protection	P...280
15	Cable clamp	P...278