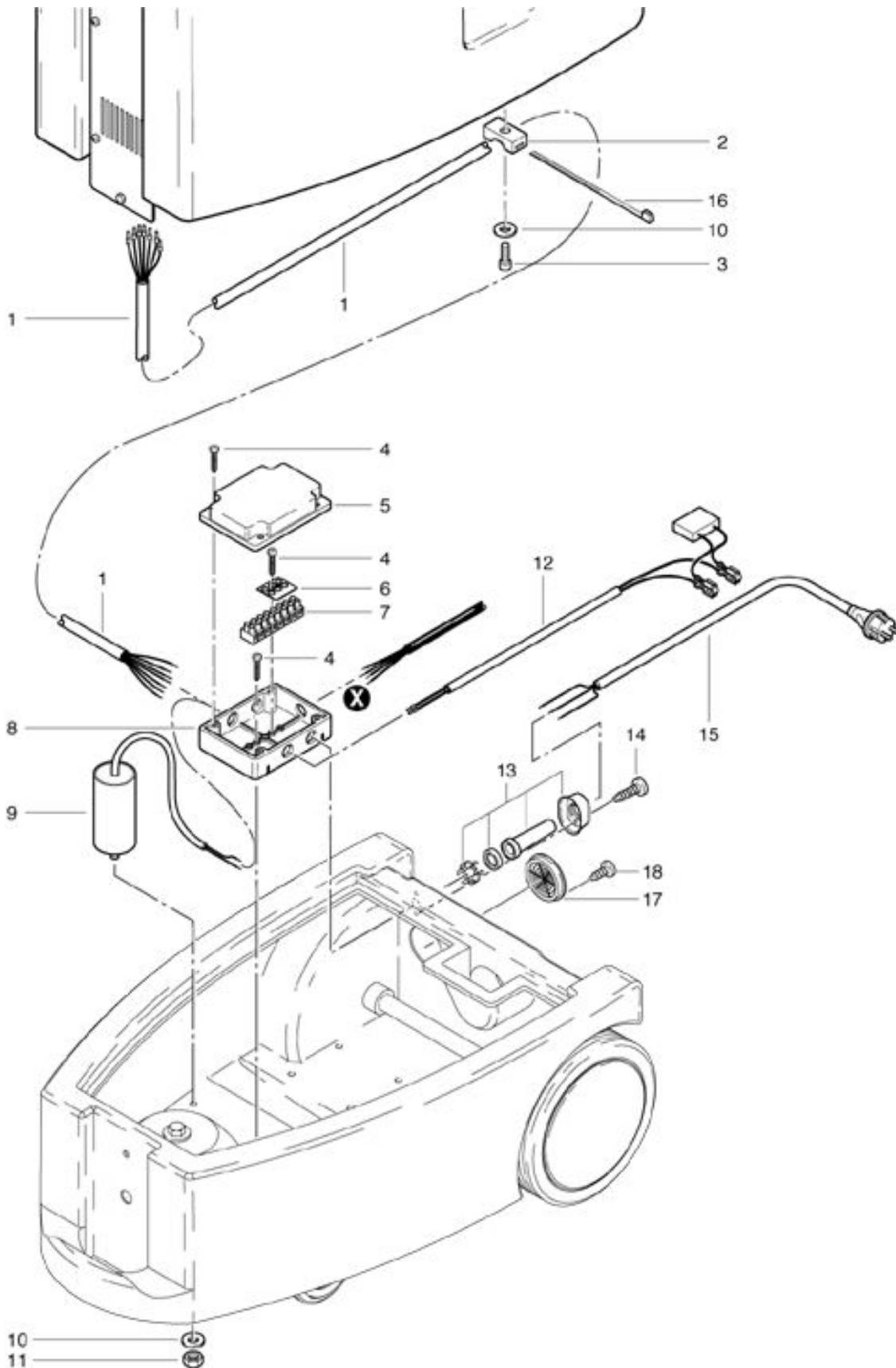


TW 1250
Electrical connection

As at: 05/16/08 Time:22:01



TW 1250

Electrical connection

As at: 05/16/08 Time:22:01

Pos.	Description	Reference
01	Cable tree for switch	124.303
02	Cable support	125.111
03	Cyl. screw M 6x12 mm	P...478 F
04	PT-screw KA 30x14 mm	P...516 S
05	Cover of distribution box	P...379 A
06	Marking plate	P...390
07	Connection block (8)	P...383 D
08	Housing of distribution box	P...379
09	Capacitor	P...385 O
10	Washer M 6	P...496 K
11	Hexagon nut M 6	P...490 D
12	Cable tree for vac motor	041.605
13	Antikink sleeve	6605178
14	PT-screw KA 40x25 mm	P...516 O
15	Mains cable 800 mm	124.107
16	Cable tie	P...609
17	Ventilation screen approximately	P...030 L
18	PT-screw KA 50x16	P...515 Z