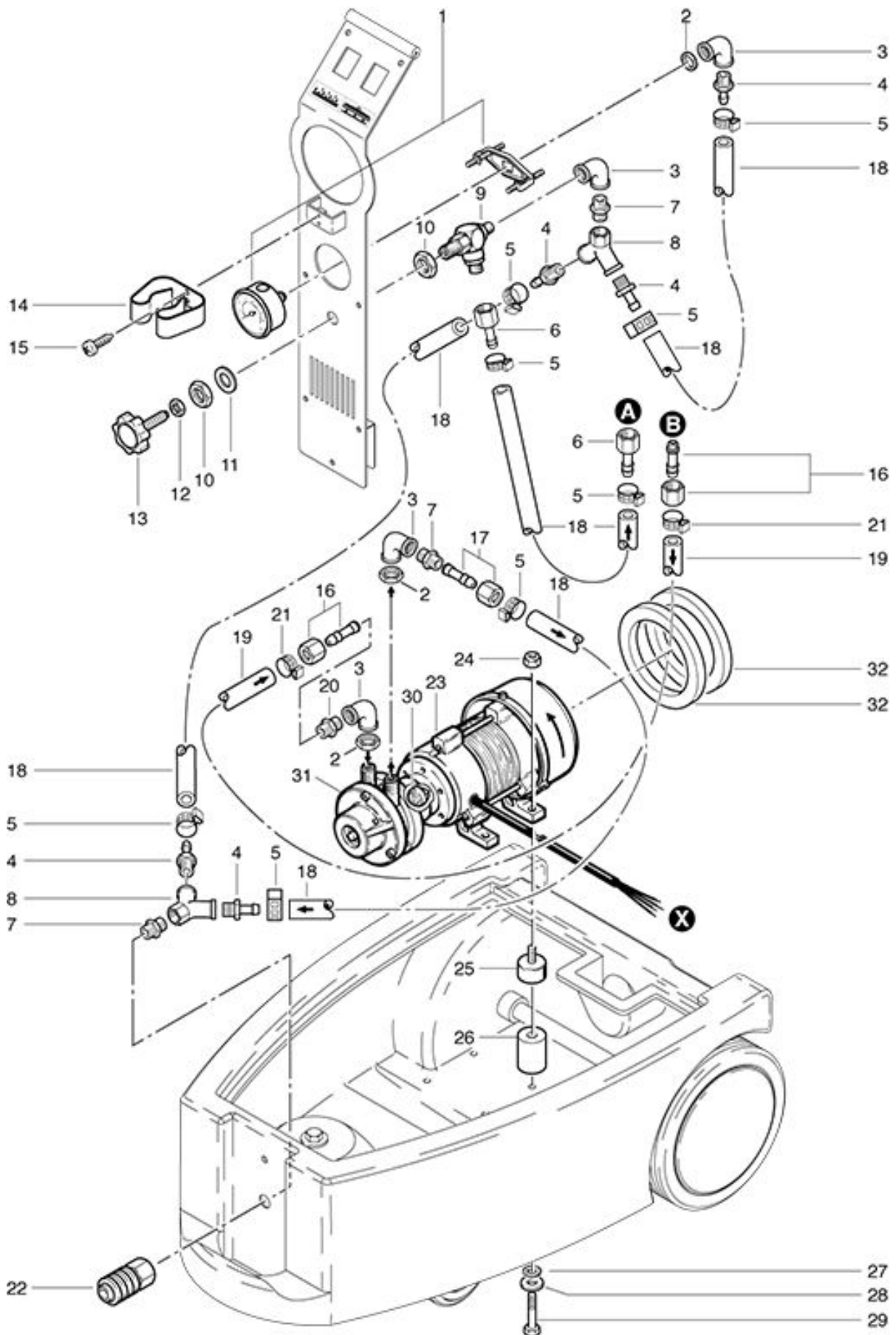


**TW 1250**  
**Pump assembling**

As at: 05/16/08 Time:22:02



# TW 1250

## Pump assembling

As at: 05/16/08 Time:22:02

<b>Pos.</b>	<b>Description</b>	<b>Reference</b>
01	Manometer HD	P...252 A
02	Hexagon nut G 1/4"	P...535 V
03	Angle G 1/4" - 1/4"	P...531 B
04	Nipple NW 8-1/4"	P...524 F
05	Hose clamp Ø15,7	P...550 B
06	Hose nipple	P...525 K
07	Double nipple G 1/4" - 1	P...520 C
08	Y-piece 1/4"	125.103
09	By pass valve	P...256
10	Hexagon nut 3/8"	P...535 B
11	Washer 17/24x1,5	P...254 E
12	Counter nut up to machine no. 8305	P...254 D
12a	beg. Mach. Nr. 8306 001	P...490 E
13	Hand weel up to machine no. 8305	P...254 C
13a	Hand weel beg. Mach. Nr. 8306 001	P...256 A
14	Clamp for mounting tool	124.314
15	Pan head screw M 4x8	P...475 D
16	Hexagon screw LW 10-3/8	P...522 F
17	Hexagon screw LW 8-1/4"	P...522 C
18	Pressure hose 1 m	110.560 C
19	Suction hose	P...294 A
20	Double nipple A 1/4" - A3/8"	P...535 A
21	Hose clamp Ø 17	P...550 C
22	Quick connector G 1/4"	380.045
23	Motor pump 230V/50Hz	P...220
24	Stop nut M 6	P...492 K
25	Round buffer M 6	500.499
26	Distance piece	125.102
27	Teetwisher	P...499 D
28	Hexagon screw M 6x 45	P...472 Y
29	Washer M 6	P...496 L
30	Coupling	P...804
31	Pump	P...801
32	Sealing ring 103/77x10 mm	P...013