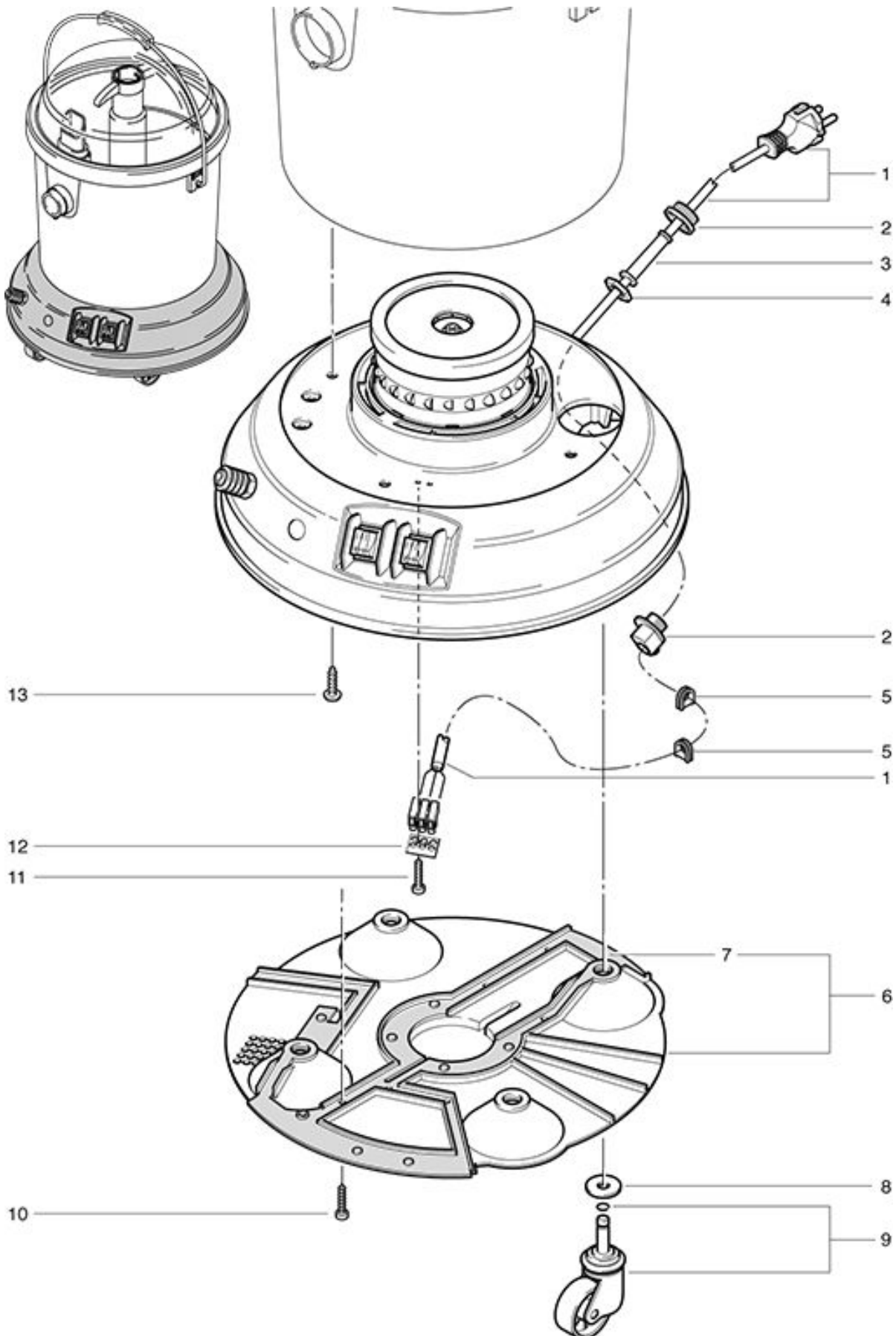


TW 300 S Housing

As at: 05/12/08 Time:20:21



TW 300 S

Housing

As at: 05/12/08 Time:20:21

Pos.	Description	Reference
01	Electr. Connection 7,5 m SEV	P...287
01	Electr. Connection 7,5 m VDE	P...288
01	Electr. Connection 7,5 m GB	P...277
02	Cable clamp	P...279
03	Cable grommet	P...280
04	Conter nut	P...279 H
05	Grommet 14x16 mm	P...014 A
06	Bottom plate with abs. sheet	P...023
07	Noise absorbing sheet	P...023 A
08	Washer M 10	P...496 S
09	Castor Ø 55 mm	P...028 A
10	Cyl. Screw 2,9x13 mm	P...482 F
11	Cyl. Screw 2,9x16 mm	P...482 E
12	Marking plate	P...390
13	PT-screw 50x15 mm	P...482 H