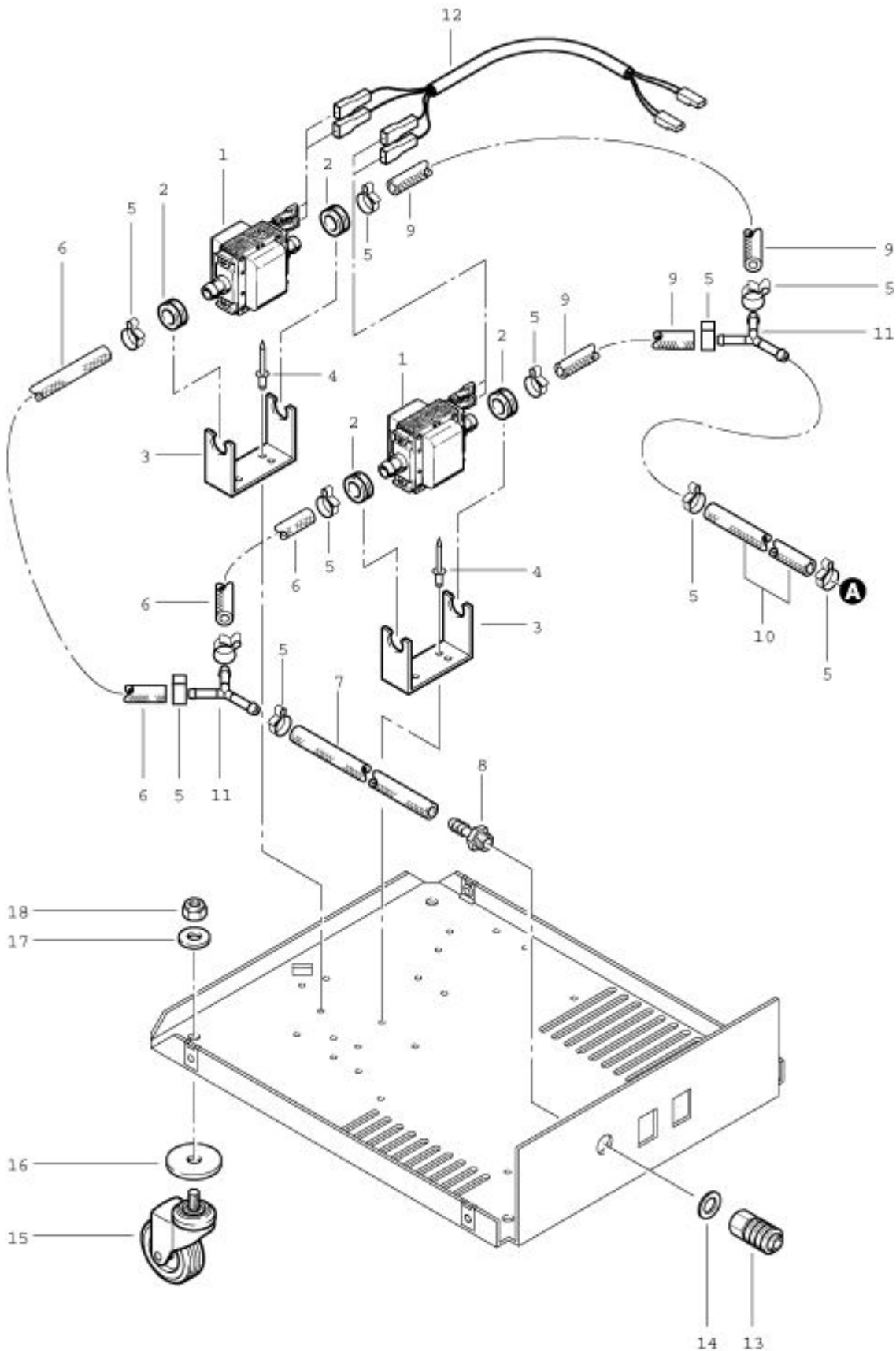


TW 350 S
Pump assembly

As at: 05/12/08 Time:20:49



TW 350 S

Pump assembly

As at: 05/12/08 Time:20:49

Pos.	Description	Reference
01	NDS-X pump	P...809
02	Grommet 14 mm	P...207A
03	Pumpholder	P...207B
04	Blind rivet dm 5x8 mm	P...485F
05	Clamp dm 14.5 mm	P...550A
06	Hose 12/6x320 mm	P...207H
07	Hose 12/6x400 mm	P...207I
08	Fitting G1/4« «	P...524F
09	Hose 12/6x210 mm	P...207G
10	Hose 12/6x500 mm	P...207F
11	Y-piece 8 mm	P...542E
12	Cable tree with diode	P...368A
13	Quick connector G1/4« «	P...500A
14	Washer 14/24x2 mm	P...260
15	Castor dm 75 x100 mm	P...204
16	Reinforcing plate 54x10.5x3 mm	P...204A
17	Washer M10	P...496S
18	Stop-nut M10	P...492Q