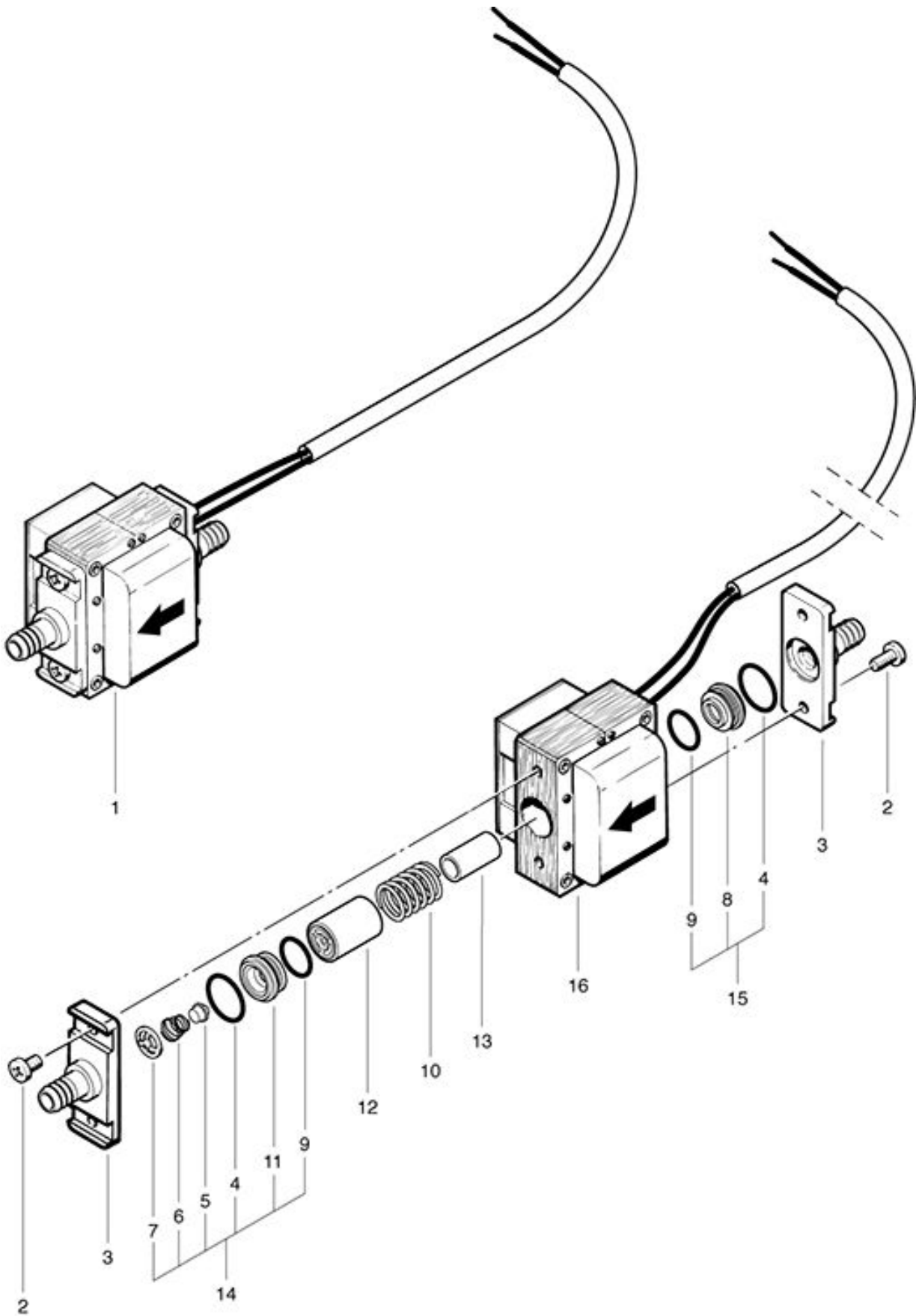


**TW 383
Pump**

As at: 05/12/08 Time:21:55



TW 383

Pump

As at: 05/12/08 Time:21:55

Pos.	Description	Reference
01	NDS-X-pump 220-240V/50Hz	380.809
02	Raised head screw M 4x10	P...481 M
03	Hose connection	P...809 M
04	O-ring Ø 14x1.5 mm	P...809 K
05	Valve cone	P...810 S
06	Valve spring	P...809 P
07	Counter ring	P...809 N
08	Spring support	P...809 F
09	O-ring Ø 12x1,5 mm	P...809 L
10	Piston spring	P...809 E
11	Valve seating	P...809 Q
12	Piston	P...809 B
13	Distance piece	P...809 S
14	Valve seating compl. including items 4-7	P...810 Y
15	Spring support compl. including items 4,8+9	P...810 X
16	Magnet coil compl. 220-240 V/50 Hz	380.809 A