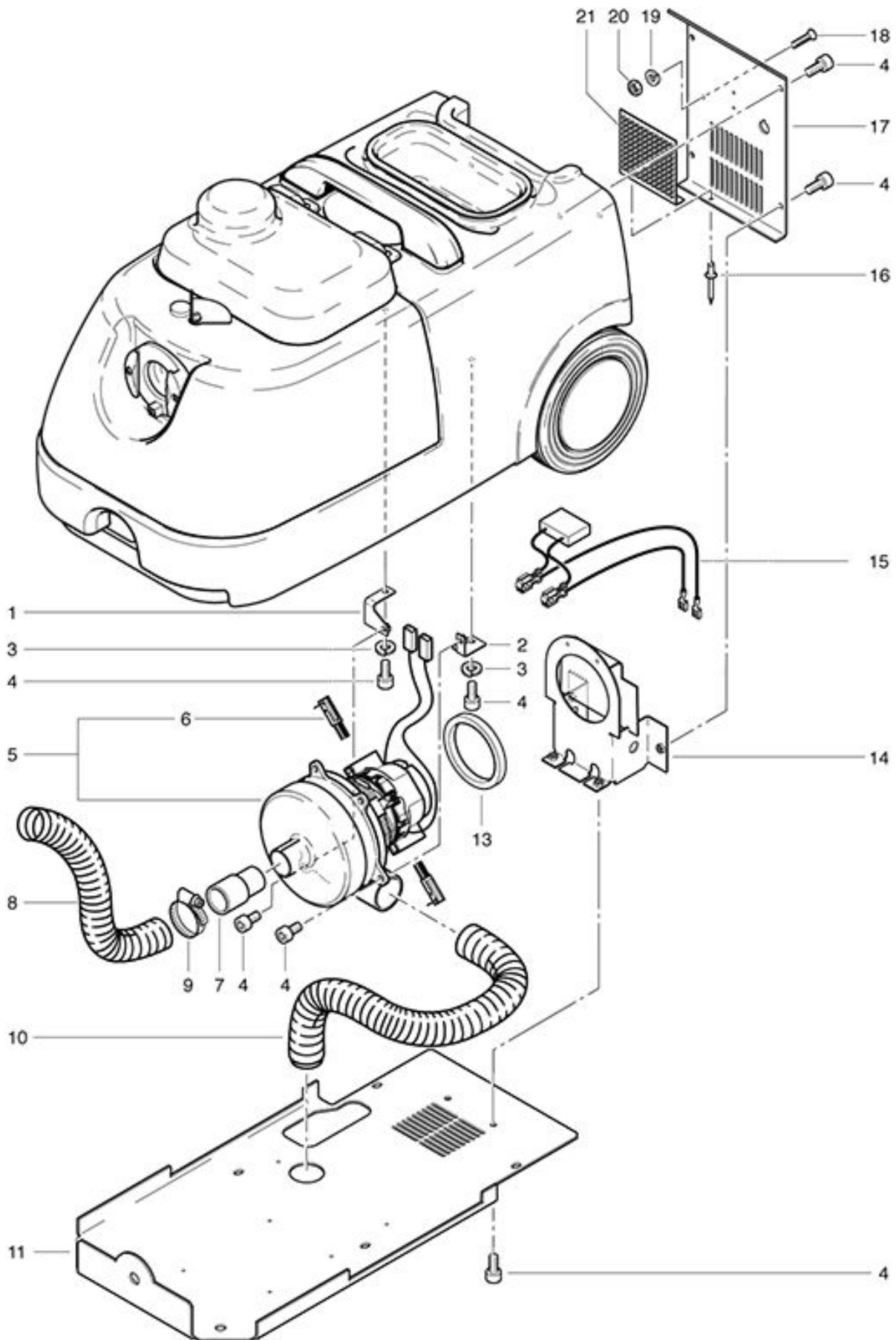


TW 401
Vacuum motor assembling

As at: 05/13/08 Time:19:24



TW 401

Vacuum motor assembling

As at: 05/13/08 Time:19:24

Pos.	Description	Reference
01	Left angle	041.603
02	Right angle	041.602
03	Spring ring M 6	P...498 U
04	Cylindrical screw M 6x12 mm	P...486 Q
05	Vacuum motor 230 V/50 Hz	420.210
06	Pair of carbon brushes	420.210 KH
07	Adaptor for vac motor	041.601
08	Suction hose 270 mm	041.040
09	Hose clamp 32-50	P...206 D
10	Exhaust hose 370 mm	041.050
11	Bottom plate	041.501
13	Seal for motor	P...013
14	Lower guiding plate	041.401
15	Cable for vac motor	041.605
16	Blind rivet Ø 3x10 mm	P...485 J
17	Controls pannel	041.310
18	Countersuck screw M 4x20 mm	P...481 A
19	Spring ring M 4	P...498 A
20	Hexagon nut M 4	P...491 Q
21	Guiding plate	041.320