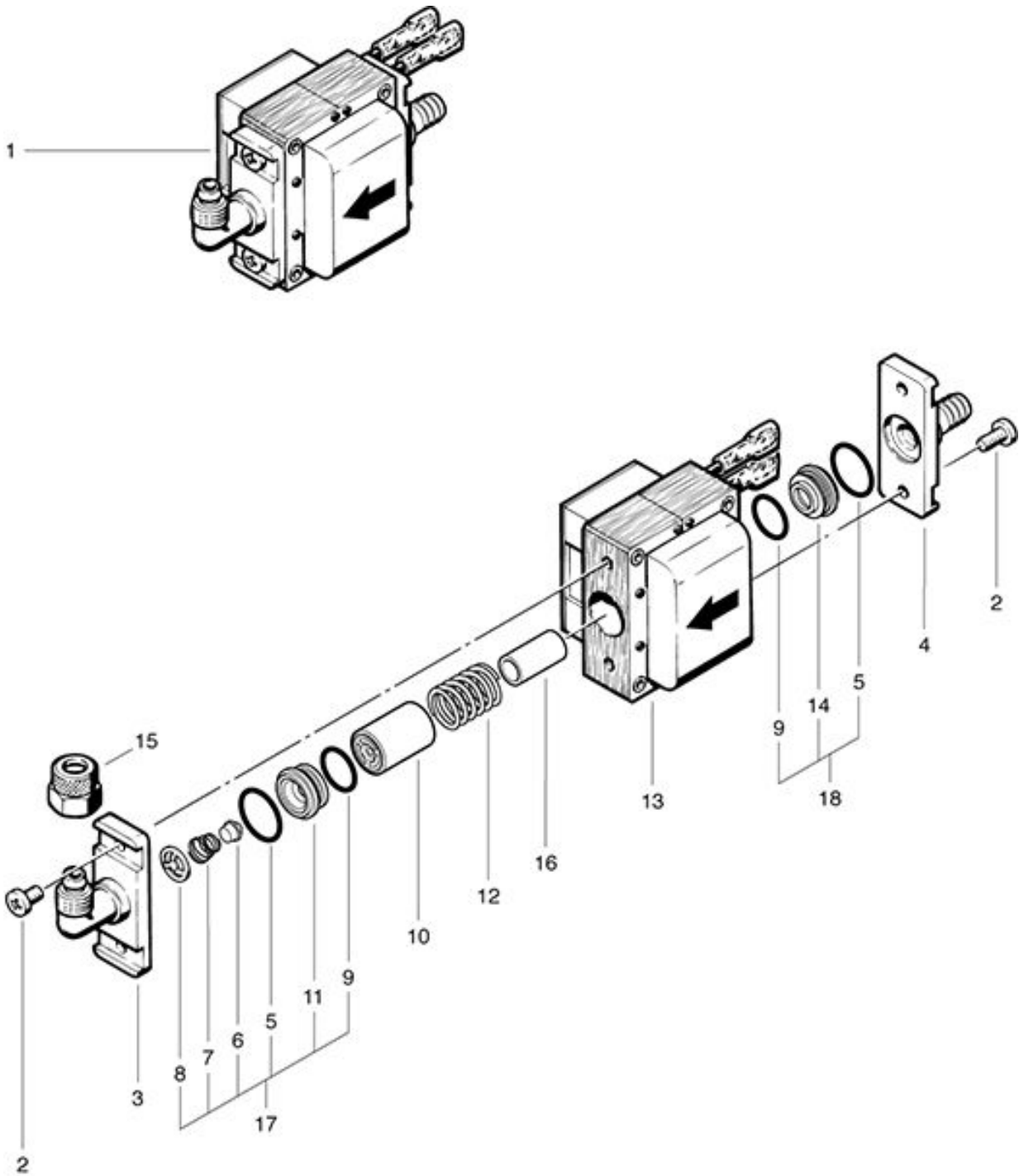


**TW 402  
Pump**

As at: 05/13/08 Time:19:33



# TW 402

## Pump

As at: 05/13/08 Time:19:33

<b>Pos.</b>	<b>Description</b>	<b>Reference</b>
01	NDS-WX pump	041.901
02	Screw M 4x10 mm	P...481 M
03	Angled connector	P...810 M
04	Straight connector	P...809 M
05	O-ring Ø 14x1,5 mm	P...809 K
06	Valve cone	P...810 S
07	Pressure spring	P...809 P
08	End ring	P...809 N
09	O-ring Ø 12x1,5 mm	P...809 L
10	Piston	P...809 B
11	Valve seating	P...809 Q
12	Piston spring	P...809 E
13	Magnet coil 230V/50 Hz	P...809 A
14	Spring support	P...809 F
15	Sleeved nut	P...523 G
16	Distance piece	P...809 S
17	Valve seating compl. Including: items 5-9+11	P...810 Y
18	Spring support compl. Including: items 5,9+14	P...810 X